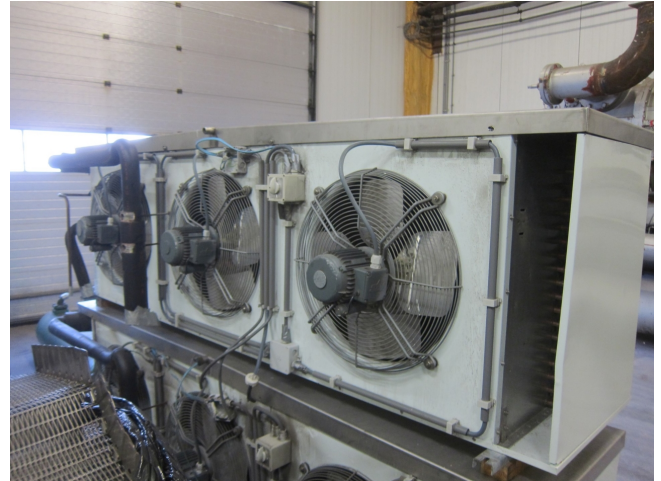


Helpman LEX 26 H

Specifications

Marca	Helpman
Tipo	LEX 26 H
Capacidad kW	22,8*
Refrigerante	Freon
Número de aficionados	3
Fan del Espacio in mm	7
Descongelación	Hot Gas
m ³ /h	14000
Tamaños	2650x850x750 mm (LxWxH)
Comentarios	Fan: 0,22 kW / 1330 RPM / Ø = 500 mm
Remarks	*Capacity based on Freon R22.
Stock	2



Description

Used Helpman LEX 26 H

Helpman LEX 26 H evaporator with Hot gas defrosting. This used evaporator has 3 fans: 0,22 kW / 1330 RPM / Ø = 500 mm / 14000 m³/h

